



The Old Cider House Ilford, Ilminster TA19 9EB



This delightful Grade II Listed 5 bedroomed 14th Century thatched long house is set in beautiful mature gardens of just over 0.5 acre with outbuildings and barn with planning for ancillary accommodation. Having been refurbished over recent years the property now offers a fabulous family living space with some superb character features in this most sought after location.





Features

- Entrance hall with inglenook fireplace
- Living room with woodburner and French doors to garden
- Dining room
- Fitted kitchen with oil fired Aga, flagstone flooring and door to garden
- Cloakroom
- Master bedroom with ensuite bathroom and roll top bath
- 3 further double bedrooms
- Study / bedroom 5
- Shower room

- Established gardens of just over 0.5 acres
- Garage with store, private driveway and off road parking
- Barn, workshop and store
- Oil fired central heating
- Private drainage

- High ceilings throughout ground floor
- Original exposed beams
- Flagstone flooring

- Council tax band F

- What3words location: [sands.times.downcast](#)







The Old Cider House is situated in the hamlet of Ilford. Local amenities are available in Ilton and Barrington and include Public House and Primary Schools.

The larger market town of Ilminster lies 2.4 miles to the South providing a range of day to day facilities.

Taunton, the County Town of Somerset, is situated within 12 miles with a wide range of shopping facilities and the Cooper Associates County Cricket Ground.

The property is well placed for road links via the A358 and A303. Taunton also benefits from a main line railway station linking to London Paddington in less than 2 hours.





The Old Cider House, Ilford, Ilminster, TA19 9EB

Approximate Area = 2613 sq ft / 242.7 sq m (excludes boiler room)

Limited Use Area(s) = 189 sq ft / 17.5 sq m

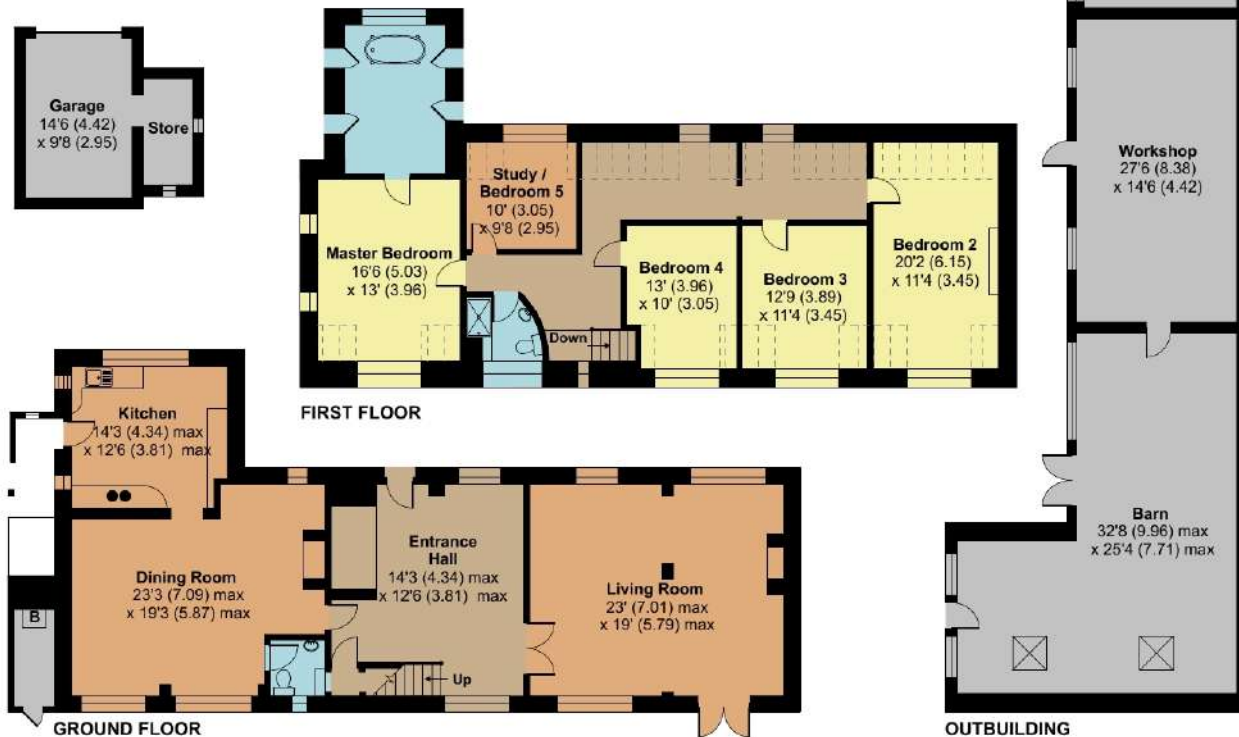
Garage = 193 sq ft / 17.9 sq m

Outbuilding = 1179 sq ft / 109.5 sq m

Total = 4174 sq ft / 387.7 sq m

Denotes restricted head height

For identification only - Not to scale



Viewing strictly through the selling agents:

Robert Cooney

Corporation Street, Taunton,
Somerset TA1 4AW

Telephone 01823 230 230

E-mail taunton@robertcooney.co.uk

Website www.robertcooney.co.uk



Certified
Property
Measurer

Floor plan produced in accordance with RICS Property Measurement Standards incorporating International Property Measurement Standards (IPMS2 Residential). © nichcom 2022.
Produced for Robert Cooney REF: 858183

For clarification, we wish to inform prospective purchasers that: these particulars are set out as a general outline only for the guidance of intended purchasers, and do not constitute, nor constitute part of, an offer or contract; all descriptions, dimensions, references to condition and necessary permission for use and occupation, and other details, are given without responsibility and any intending purchasers should not rely on them as statements or representation of fact, but must satisfy themselves by inspection or otherwise as to the correctness of each of them; no person in the employment of Robert Cooney has any authority to make or give any representation or warranty whatever in relation to this property; we have not carried out a detailed survey nor tested the services, appliances and specific fittings.

robert
cooney

